

## TRAP1/Hsp75 Monoclonal Antibody

### ORDERING INFORMATION

**Catalog No.:** 11143 (clone 3H4-2H6)

**Size:** 100ug in PBS (1mg/ml), pH 7.4,  
50% glycerol, 0.09% sodium azide.

Purified by Protein G affinity  
chromatography.

### BACKGROUND

The molecular chaperone family of 90kDa heat shock proteins (Hsp90) is a highly conserved protein family that plays an important physiological role. Hsp90 is best known for its association with signal transduction processes. Tumor necrosis factor receptor-associated protein 1 (TRAP1) is a recently cloned homolog of Hsp90. Like Hsp90, TRAP1 is associated with numerous proteins that are involved in multiple pathways. Data indicates that TRAP1 is a mitochondrial matrix protein: it is localized in mitochondria of mammalian cells and contains a mitochondrial targeting presequence.

### SPECIFICATION SUMMARY

**Antigen:** Recombinant human TRAP1

**Accession no.:** NP\_057376.2

**Gene ID:** 10131

**Host Species:** Mouse

**Antibody Class:** IgG1

### SPECIFICITY

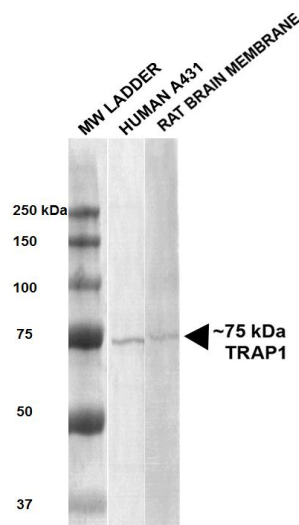
This antibody recognizes human and rat TRAP1. Other species have not been investigated.

### APPLICATIONS

*Immunoblotting:* use at 1ug/ml. A band of ~75kDa is detected.

*Positive control:* A431 cell lysate or rat brain lysate.

These are recommended concentrations; enduser should determine optimal concentrations for their applications.



Detection of TRAP1/Hsp75 with #11143 at 1ug/ml.

### DILUTION INSTRUCTIONS

Dilute in PBS or medium that is identical to that used in the assay system.

### STORAGE AND STABILITY

This antibody is stable for at least one (1) year at -20°C. Avoid repeated freeze-thaw cycles.

*For in vitro investigational use only. Not intended for diagnostic or therapeutic applications.*