

## Prostaglandin E Synthase Polyclonal Antibody

### ORDERING INFORMATION

**Catalog No.:** 13809

**Size:** 50ug peptide immunogen affinity purified antibody in PBS containing 0.1% sodium azide.

### BACKGROUND

Prostaglandin E Synthase (PGES) is a membrane associated protein involved in eicosanoid and glutathione metabolism as part of the arachidonic acid signaling pathway. PGES expression is induced by the proinflammatory cytokine IL-1B, and its activity is glutathione dependent. PGES is also expressed at high levels in p53-expressing cells.

### SPECIFICATION SUMMARY

**Antigen:** Synthetic peptide conjugated to KLH.

**Host Species:** Rabbit

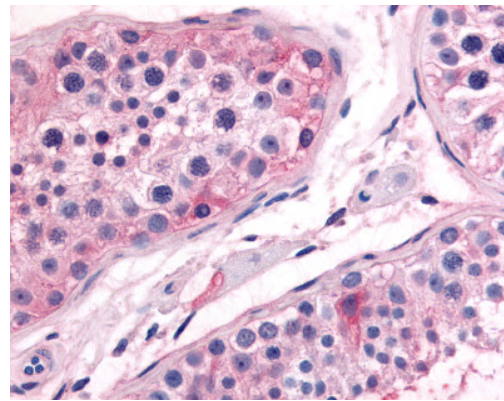
**Preservatives:** 0.1% sodium azide

### SPECIFICITY

This antibody recognizes an epitope near the N-terminus of human PGES.

### APPLICATIONS

*Immunohistochemistry:* Use at 10ug/ml.



Testis: Formalin-fixed, paraffin-embedded

### DILUTION INSTRUCTIONS

Dilute in PBS or medium which is identical to that used in the assay system.

### STORAGE AND STABILITY

This antibody is stable at 4°C (short-term) and -70°C (long-term).

*For in vitro investigational use only. Not for use in therapeutic or diagnostic procedures.*