

## CA-125 Monoclonal Antibodies

### ORDERING INFORMATION

**Catalog Nos.:** 3330 (clone 75), 3345 (clone 325), and 3346 (clone 306).

**Format:** 100ug purified antibody in 10mM Tris buffer, pH 7.5, 0.15M NaCL, 0.05% sodium azide. Purified by ion exchange chromatography.

### BACKGROUND

CA-125 (cancer antigen 125, carcinoma antigen 125, or carbohydrate antigen 125) also known as mucin 16 or MUC16 is encoded by the *MUC16* gene in humans. MUC16 is a member of the mucin family of glycoproteins. CA-125 is most consistently elevated in epithelial ovarian cancer, but can be expressed in a number of gynecologic (endometrial, fallopian tube) and non-gynecologic (pancreatic, breast, colon and lung) cancers. It may also be elevated in cases of benign abnormalities such as endometriosis.

### SPECIFICATION SUMMARY

**Antigen:** CA-125 purified from ovarian carcinoma cells.

**Host Species:** Mouse

**Antibody Class:** IgG1

**Specificity:** #3330 and #3345 epitope specificity group B (ISOBM\* classification).  
#3346 epitope specificity group A (ISOBM\* classification)

\*International Society of Oncology and Biomarkers

### APPLICATIONS

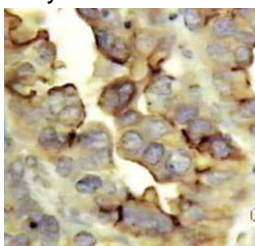
These antibodies may be used in ELISA and Western blotting to detect CA-125.

*Positive control:* OVCAR3 ovarian adenocarcinoma cells.

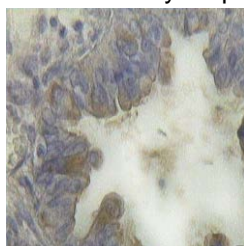
Suggested pairs for sandwich ELISA:

<u>Capture</u>	<u>Detection</u>
#3346	#3345
#3346	#3330

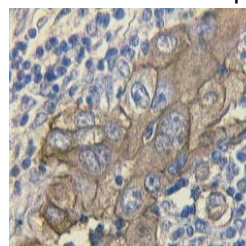
#3345 may be used in immunohistochemistry on paraffin-embedded samples.



Lung adenocarcinoma



Serosal ovarian adenocarcinoma



Bladder adenocarcinoma

### DILUTION INSTRUCTIONS

Dilute in PBS or medium that is identical to that used in the assay system.

### STORAGE AND STABILITY

These antibodies are stable for at least one (1) year at -20°C. Avoid multiple freeze-thaw cycles.

*For in vitro investigational use only. Not intended for therapeutic or diagnostic applications.*