

## Her2/Neu Monoclonal Antibody

### ORDERING INFORMATION

Catalog No.	Clone No.	Size
34061	G002.1	100ul

**Format:** Purified antibody in Tris buffer, pH 7.3-7.7, 1% BSA, <0.1% sodium azide.

### BACKGROUND

The Her2/Neu (c-erbB-2) proto-oncogene product is a trans-membrane receptor tyrosine kinase that is clinically indicated in a number of carcinomas. Overexpression of the Her2/Neu protein has been associated with ductal breast cancer as well as with pulmonary and gastric adenocarcinomas. A correlation between Her2/Neu and p53 has also been reported as overexpression of both proteins has been associated with early invasion and metastasis in bladder cancer.

### DESCRIPTION

**Antigen:** Recombinant human Her2/Neu.

**Accession No.:** P04626

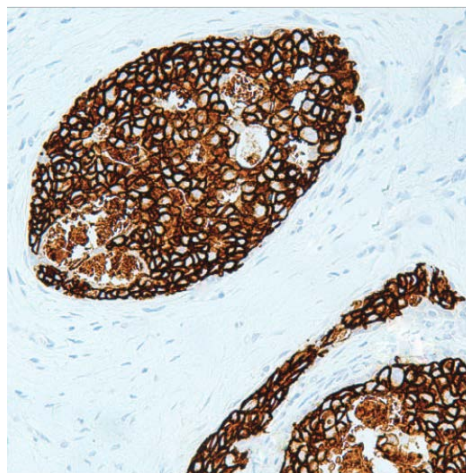
**Host:** Mouse

**Antibody Subtype:** IgG2a

**Specificity:** Human Her2/Neu. Reactivity with other species has not been investigated.

### APPLICATIONS

*Immunohistochemistry:* use at a dilution of 1:100-1:200 on formalin-fixed, paraffin-embedded samples after heat-induced epitope retrieval at pH 9 for 10-30 minutes.



Detection of Her2/Neu in human breast carcinoma with #34061 diluted 1:100-1:200.

### STORAGE AND STABILITY

Store at 2-8°C. Do not freeze.

*For in vitro investigational use only. Not for use in diagnostic or therapeutic applications.*