

## PD-1 Monoclonal Antibody

### ORDERING INFORMATION

Catalog No.	Clone No.	Size
34067	G001.1	100ul

**Format:** Purified antibody in Tris buffer, pH 7.3-7.7, 1% BSA, <0.1% sodium azide.

### BACKGROUND

Programmed Death 1 (PD-1) is a member of the CD28/CTLA-4 family of T-cell regulators expressed as a co-receptor on the surface of activated T-cells, B-cells, and macrophages. New studies have suggested that the PD-1/PD-L1 signaling pathway may be linked to anti-tumor immunity as PD-L1 has been shown to induce apoptosis of activated T-cells or inhibit activity of cytotoxic T-cells. In comparison to CD10 and bcl-6, PD-1 is expressed by fewer B-cells and has therefore been considered a more specific and useful diagnostic marker for angioimmunoblastic T-cell lymphoma. Therapies targeted toward the PD-1 receptor have shown remarkable clinical responses in patients with various types of cancer, including non-small cell lung cancer, melanoma, and renal-cell cancer.

### DESCRIPTION

**Antigen:** Recombinant human PD-1.

**Accession No.:** Q15116

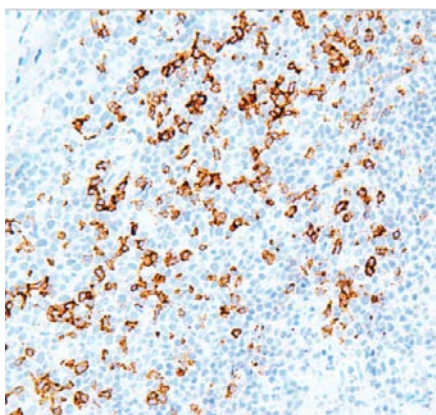
**Host:** Mouse

**Antibody Subtype:** IgG2b

**Specificity:** Human PD-1. Reactivity with other species has not been investigated.

### APPLICATIONS

*Immunohistochemistry:* use at a dilution of 1:100-1:200 on formalin-fixed, paraffin-embedded samples after heat-induced epitope retrieval at pH 9 for 10-30 minutes.



Detection of PD-1 in human tonsil with #34067 diluted 1:100-1:200.

### STORAGE AND STABILITY

Store at 2-8°C. Do not freeze.

*For in vitro investigational use only. Not for use in diagnostic or therapeutic applications.*