

PSA Monoclonal Antibody

ORDERING INFORMATION

| Catalog No. | Clone No. | Size |
|-------------|-----------|-------|
| 34069 | G654.1 | 100ul |

Format: Purified antibody in Tris buffer, pH 7.3-7.7, 1% BSA, <0.1% sodium azide.

BACKGROUND

Prostate-specific antigen (PSA), also known as gamma-seminoprotein or kallikrein-3 (KLK3), is a glycoprotein enzyme encoded in humans by the *KLK3* gene. PSA is a member of the kallikrein-related peptidase family and is secreted by the epithelial cells of the prostate gland. PSA is present in small quantities in the serum of men with healthy prostates but is often elevated in cases of prostate cancer or other prostate disorders.

DESCRIPTION

Antigen: Recombinant human PSA.

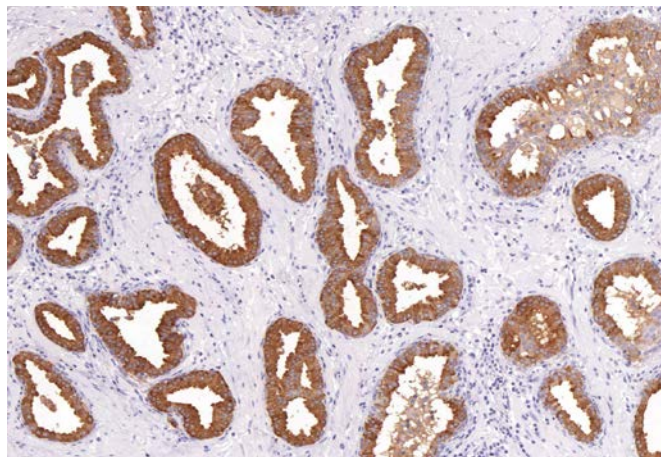
Accession No.: P07288

Host: Mouse

Specificity: Human PSA. Reactivity with other species has not been investigated.

APPLICATIONS

Immunohistochemistry: use at a dilution of 1:100-1:200 on formalin-fixed, paraffin-embedded samples after heat-induced epitope retrieval at pH 9 for 10-30 minutes.



Detection of PSA in human prostate with #34069 diluted 1:100-1:200.

STORAGE AND STABILITY

Store at 2-8°C. Do not freeze.

For in vitro investigational use only. Not for use in diagnostic or therapeutic applications.