

PDK1 (Phospho-Ser241) Polyclonal Antibody

ORDERING INFORMATION

Catalog No.: 43005

Format: 100ul at 1.0mg/ml in PBS (without Mg²⁺ and Ca²⁺), pH 7.4, 150mM NaCl, 0.02% sodium azide and 50% glycerol. Affinity-purified on phosphopeptide; non-phosphopeptide-reactive antibodies were removed by chromatography on non-phosphorylated peptide.

BACKGROUND

PDK1 phosphorylates and activates PKB/AKT, PKA, PKC-zeta, RPS6KA1, and RPS6KB1 and plays a role in general signaling processes and in development.

SPECIFICATION SUMMARY

Antigen: Peptide sequence that includes phosphorylation site of serine 241 (A-N-S(p)-F-V) derived from human PDK1 and conjugated to KLH.

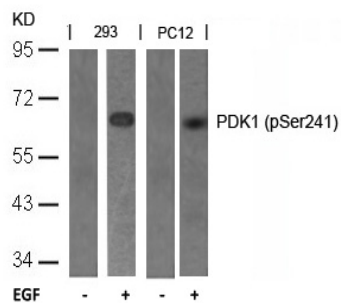
Accession no.: O15530, NP_002604.1

Host Species: Rabbit

Specificity: This antibody detects human, mouse, and rat endogenous PDK1 only when phosphorylated at serine 241.

APPLICATIONS

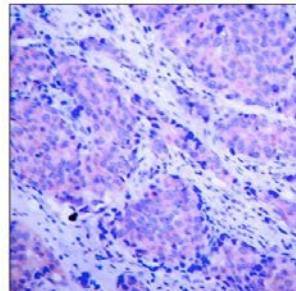
Western blotting: use at dilution of 1:500-1:1,000. A band of ~63kDa is detected.



Detection of PDK1 (Phospho-Ser241) in 293 and PC12 cell extracts untreated or treated with EGF.

These are recommended working dilutions. Enduser should determine optimal dilutions for their applications.

Immunohistochemistry: use at dilution of 1:50-1:100.



Detection of PDK1 (phospho-Ser241) in paraffin-embedded human breast carcinoma tissue.

DILUTION INSTRUCTIONS

Dilute in PBS or medium that is identical to that used in the assay system.

STORAGE AND STABILITY

This antibody is stable for at least one (1) year at -20°C. Can be stored at 4°C for short-term.

For in vitro investigational use only. Not intended for therapeutic or diagnostic applications.