

Raf1 (Phospho-Ser259) Polyclonal Antibody

ORDERING INFORMATION

Catalog No.: 43006

Format: 100ul at 1.0mg/ml in PBS (without Mg²⁺ and Ca²⁺), pH 7.4, 150mM NaCl, 0.02% sodium azide and 50% glycerol. Affinity-purified on phosphopeptide; non-phosphopeptide-reactive antibodies were removed by chromatography on non-phosphorylated peptide.

BACKGROUND

RAF proto-oncogene serine/threonine-protein kinase, also known as Raf1, is part of the ERK1/2 pathway as a MAP kinase kinase kinase (MAP3K) that functions downstream of the Ras subfamily of membrane associated GTPases. Raf1 is a member of the Raf kinase family of serine/threonine-specific protein kinases from the TKL (Tyrosine-kinase-like) group of kinases.

SPECIFICATION SUMMARY

Antigen: Peptide sequence that includes phosphorylation site of serine 259 (S-T-S(p)-T-P) derived from human Raf1 and conjugated to KLH.

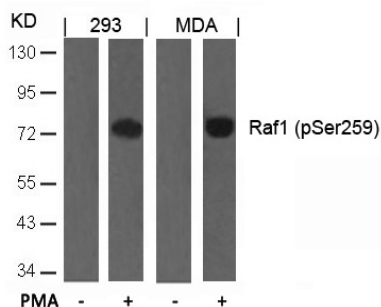
Accession no.: P04049, NP_002871.1

Host Species: Rabbit

Specificity: This antibody detects endogenous human, mouse, and rat Raf1 only when phosphorylated at serine 259.

APPLICATIONS

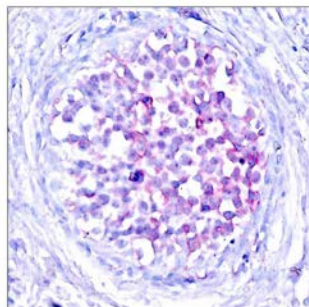
Western blotting: use at dilution of 1:500-1:1,000. A band of ~73kDa is detected.



Detection of Raf1 (Phospho-Ser259) in 293 and MDA cell extracts untreated or treated with PMA.

These are recommended working dilutions. Enduser should determine optimal dilutions for their applications.

Immunohistochemistry: use at dilution of 1:50-1:100.



Detection of Raf1 (phospho-Ser259) in paraffin-embedded human breast carcinoma tissue.

DILUTION INSTRUCTIONS

Dilute in PBS or medium that is identical to that used in the assay system.

STORAGE AND STABILITY

This antibody is stable for at least one (1) year at -20°C. Can be stored at 4°C for short-term.

For in vitro investigational use only. Not intended for therapeutic or diagnostic applications.