

Rel (Phospho-Ser503) Polyclonal Antibody

ORDERING INFORMATION

Catalog No.: 43020

Format: 100ul at 1.0mg/ml in PBS (without Mg²⁺ and Ca²⁺), pH 7.4, 150mM NaCl, 0.02% sodium azide and 50% glycerol. Affinity-purified on phosphopeptide; non-phosphopeptide-reactive antibodies were removed by chromatography on non-phosphorylated peptide.

BACKGROUND

Transcription factor c-Rel is a member of the Rel/NFκB family which also includes Rel-A, Rel-B, NFκB1, and NFκB2. These proteins are related through a highly conserved N-terminal region referred to as the "Rel domain" which is responsible for DNA binding, dimerization, nuclear localization, and binding to the NFκB inhibitor.

SPECIFICATION SUMMARY

Antigen: Peptide sequence that includes phosphorylation site of serine 503 (T-S-S(p)-D-S) derived from human Rel and conjugated to KLH.

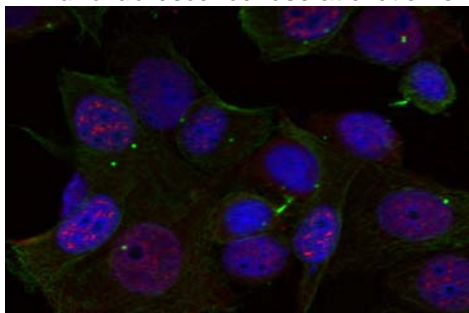
Accession no.: Q04864, NP_002899.1

Host Species: Rabbit

Specificity: This antibody detects endogenous human Rel only when phosphorylated at serine 503.

APPLICATION

Immunofluorescence: use at dilution of 1:100-1:200.



Detection of Rel (phospho-503) in methanol-fixed HeLa cells.

These are recommended working dilutions. Enduser should determine optimal dilutions for their applications.

DILUTION INSTRUCTIONS

Dilute in PBS or medium that is identical to that used in the assay system.

STORAGE AND STABILITY

This antibody is stable for at least one (1) year at -20°C. Can be stored at 4°C for short-term use.

For in vitro investigational use only. Not intended for therapeutic or diagnostic applications.