

## HER2 (Phospho-Tyr1248) Polyclonal Antibody

### ORDERING INFORMATION

**Catalog No.:** 43079

**Format:** 100ul at 1.0mg/ml in PBS (without Mg<sup>2+</sup> and Ca<sup>2+</sup>), pH 7.4, 150mM NaCl, 0.02% sodium azide and 50% glycerol. Affinity-purified on phosphopeptide; non-phosphopeptide-reactive antibodies were removed by chromatography on non-phosphorylated peptide.

### BACKGROUND

HER2 is a member of the human epidermal growth factor receptor (HER/EGFR/ERBB) family. Amplification or over-expression of this oncogene has been shown to play an important role in the development and progression of certain aggressive types of breast cancer. In recent years HER2 has become an important biomarker and target of therapy for approximately 30% of breast cancer patients.

### SPECIFICATION SUMMARY

**Antigen:** Peptide sequence that includes phosphorylation site of tyrosine 1248 (P-E-Y(p)-L-G) derived from human HER2 and conjugated to KLH.

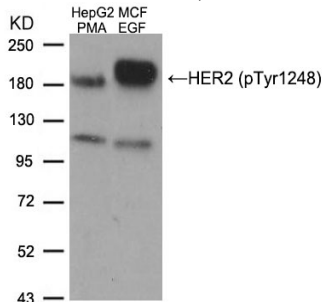
**Host Species:** Rabbit

**Specificity:** This antibody detects endogenous human, mouse, and rat HER2 only when phosphorylated at tyrosine 1248.

**Accession no.:** P04626, NP\_001005862.1

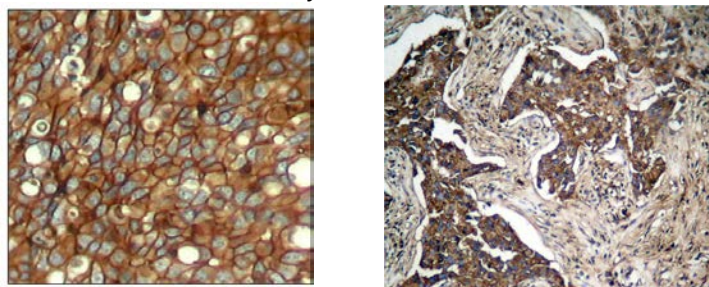
### APPLICATIONS

*Immunoblotting:* use at dilution of 1:500-1:1,000. A band of ~185kDa is detected.



Detection of HER2 (phospho-Tyr1248) in extracts of HepG2 cells treated with PMA and MCF cells treated with EGF.

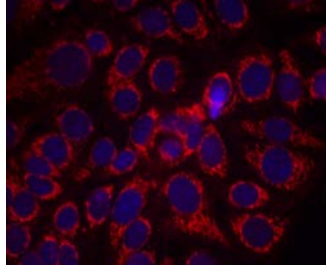
*Immunohistochemistry:* use at dilution of 1:50-1:100.



Detection of HER2 (phospho-Tyr1248) in paraffin-embedded human breast carcinoma tissue (left) and human lung carcinoma tissue (right).

## HER2 (Phospho-Tyr1248) Polyclonal Antibody

*Immunofluorescence: use at dilution of 1:100-1:200.*



Detection of HER2 (phospho-Tyr1248) in methanol-fixed MCF-7 cells.

These are recommended working dilutions. Endusers should determine optimal dilutions for their applications.

### **DILUTION INSTRUCTIONS**

Dilute in PBS or medium that is identical to that used in the assay system.

### **STORAGE AND STABILITY**

This antibody is stable for at least one (1) year at -20°C. Can be stored at 4°C for short-term.

*For in vitro investigational use only. Not intended for therapeutic or diagnostic applications.*