

Cytokine Receptor-like Factor 2 Monoclonal Antibody

ORDERING INFORMATION

Catalog No.: 90011 (clone 8H8)

Format: 100ug, Protein A-purified, lyophilized, 0.1M Tris, 0.1M glycine, 2% sucrose, 1mg/ml.

BACKGROUND

Cytokine Receptor-like Factor 2, also known as thymic stromal lymphopoietin protein receptor (TSLPR), is the product of the CRLF2 gene. The protein encoded by this gene is a receptor for thymic stromal lymphopoietin (TSLP). Together with the interleukin 7 receptor (IL7R), the encoded protein and TSLP activate STAT3, STAT5, and JAK2 pathways, which control processes such as cell proliferation and development of the hematopoietic system. Two transcript variants encoding different isoforms have been found for this gene.

SPECIFICATION SUMMARY

Antigen: Recombinant human TSLPR-Fc fusion protein. Accession no. Q9HC73.

Host species: Mouse.

Antibody Class: IgG1.

Preservative: None.

SPECIFICITY

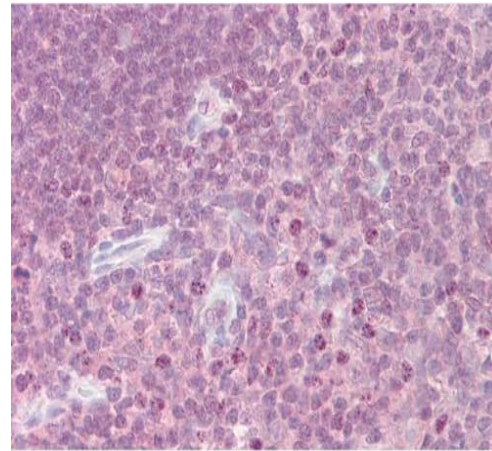
This antibody reacts with human TSLPR.

APPLICATIONS

ELISA: use at 0.05-0.10ug/ml.

Immunoblotting: use at 0.5-1ug/ml. A band of ~42kDa is detected.

Immunohistochemistry: Formalin-fixed, paraffin-embedded tissue. Use at 1-10ug/ml.



Staining of human thymus with #90011.

These are recommended concentrations. Enduser should determine optimal concentrations for their applications.

RECONSTITUTION

Reconstitute in distilled water.

STORAGE AND STABILITY

This product is stable for at least one (1) year at -20°C to -70°C. Reconstituted product should be stored in appropriate aliquots to avoid repeated freeze-thaw cycles.

For in vitro investigational use only. Not for use in therapeutic or diagnostic procedures.